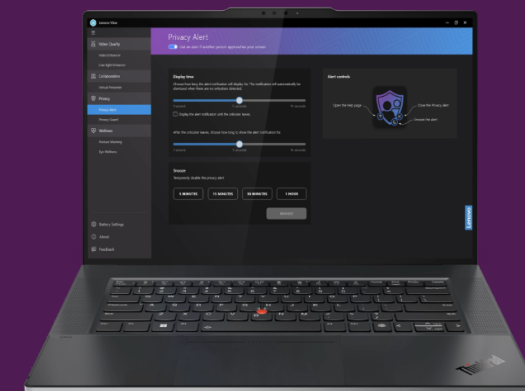


# ThinkPad Z16 Gen 2

This ThinkPad is designed to meet the diverse needs of modern-hybrid professionals. Crafted with a sleek aluminum top and bottom, it exudes sophistication and durability at its best. The powerful AMD Ryzen 9 processor seamlessly tackles tasks such as document editing, data analysis and graphic designing. The integrated AMD Radeon 780M graphics and discrete AMD Radeon RX 6550M graphics offer unparalleled visual experience. Running out of power during client meetings or on-location assignments isn't an option anymore. The impressive 72Wh battery supports Rapid Charge and lasts up to 18.4 hours.



## Built for business with cutting-edge technology

The ThinkPad Z Series is an ultraportable workstation; thin and light, yet packed with professional graphics, processing and storage as well as latest collaboration features for financial services specialists.

Immerse yourself in the brilliance of the device's 16" WQUXGA multi-touch display that comes with anti-reflection and anti-smudge surface. The 100% DCI-P4 color gamut and 16:10 aspect ratio bring your content to life whereas the Dolby Atmos stereo speakers and FHD 1080p+IR hybrid camera elevate your digital experience.

Say goodbye to lagging downloads and hello to streamlined productivity. With MediaTek Wi-Fi 6E, you'll experience lightning-fast wireless speeds and seamless internet connectivity. The inclusion of USB-C 3.2 Gen 2 ensures rapid data transfer, while dual USB 4 connectivity ports offer versatility for power delivery and peripheral connections.

The onboard HD Realtek audio chip, 2W dual Dolby Atmos stereo speakers, Dolby Voice dual-array mics and FHD 1080p camera optimizes audio and video conferencing experiences for users.

## Lenovo Services

Lenovo delivers tailored sustainability services, devices, and infrastructure solutions from our broad portfolio, working closely with you to support your target outcomes across the IT lifecycle..



### On-site Service

- If a problem can't be fixed remotely, we will visit your location
- Normally next business day service
- Agreed appointment times

## Accessories

### Lenovo USB-C Wired In-Ear Headphones

- Hear every detail with the impressive 9mm audio drivers that produce rich, natural tones.
- Designed to be business-ready on any USB-C device, at any time.
- Play and pause media via a single convenient button.



PN: 4XD1J77351

### Lenovo 500 USB-C Universal Dock

- 9 powerful expansion ports to maximize productivity.
- Next-gen plug-and-play simplicity and dynamic power delivery.
- Constructed using 40% recycled plastic materials.



PN: G0AA0135xx2

# ThinkPad Z16 Gen 2

## Performance

### Processor

AMD Ryzen 5/7/9

### Operating System

Windows 11 Pro  
 Windows 11 Home  
 Windows 11 Home Single Language  
 Windows 11 DG Windows 10 Pro 64  
 Fedora Linux  
 Linux  
 Ubuntu Linux

### Graphics

AMD Radeon 760M Graphics (integrated)  
 AMD Radeon 780M Graphics (integrated)  
 AMD Radeon RX 6550M

### Memory

16GB LPDDR5x-6400, soldered  
 32GB LPDDR5x-6400, soldered  
 64GB LPDDR5x-6400, soldered

### Storage<sup>1</sup>

Up to 1x 2TB M.2 2280 PCIe NVMe SSD

<sup>1</sup>The storage capacity supported is based on the test results with current Lenovo storage offerings.

### Audio

High Definition (HD) Audio  
 Stereo speakers, 2W x2, Dolby Atmos  
 Dual-microphone array, 360° far-field, Dolby Voice

### Camera\*

FHD 1080p + IR hybrid, with E-shutter  
 FHD 1080p + IR discrete, with E-shutter

### Battery<sup>2</sup>

72Wh (up to 18.46 hr) battery, Rapid Charge

<sup>2</sup>Battery life claims are approximate maximum. Actual result will vary depending on many factors and the maximum battery capacity will decrease with time and use.

### Power Adapter\*

135W USB-C slim adapter, PD 3.0

## Design

### Display<sup>3</sup>

16" WUXGA (1920x1200) IPS Anti-glare 16:10  
 - 400nits, 100% sRGB, low power, TÜV Low Blue Light

16" WUXGA (1920x1200) IPS ARAS 16:10  
 - 400nits, 100% sRGB, on-cell touch, low power, TÜV Low Blue Light

16" WQUXGA (3840x2400) OLED ARAS 16:10  
 - 400nits, 100% DCI-P3, OGS touch, DisplayHDR 400, Dolby Vision, TÜV Low Blue Light

<sup>3</sup>IPS (in-plane switching) technology may refer to IPS, PLS, ADS, AHVA, AAS.

### Pen\*

Pen sold separately\*

### Keyboard

6-row, spill-resistant, backlight

### Touchpad

TrackPoint and glass surface Haptic Touchpad  
 80 x 120 mm (3.15 x 4.72 inches)

### Dimensions<sup>4</sup>

354.4 x 237.4 x 15.8 mm (13.95 x 9.35 x 0.62 inches)

<sup>4</sup>The system dimensions may vary depending on configurations.

### Weight<sup>5</sup>

Starting at 1.81 kg (3.99 lbs)

<sup>5</sup>The system weight is approximate and may vary depending on configurations

### Color

Arctic grey (top), black (bottom)

### Case material

Aluminium (top), aluminium (bottom)

## Connectivity

### WLAN + Bluetooth\*<sup>6 7</sup>

MediaTek Wi-Fi 6E RZ616, 802.11ax, Bluetooth 5.3

<sup>6</sup>Wi-Fi 6E is only enabled on Windows 11 and operates as Wi-Fi 6 with Windows 10.

<sup>7</sup>Bluetooth 5.3 operation requires Windows 11.

### Ports

1x USB-C 3.2 Gen 2 (data, PD 3.0, DP 1.4a)  
 2x USB4 40Gbps (data, PD 3.0, DP 1.4a)  
 1x SD card reader  
 1x Headphone / microphone combo jack (3.5mm)

### Docking

Docking support via USB-C

## Security & Privacy

### Security

Discrete TPM 2.0 and Microsoft Pluton TPM 2.0  
 Kensington Nano Security Slot  
 Touch style MOC fingerprint reader  
 E-shutter  
 IR camera for Windows Hello (facial recognition)  
 Glance by Mirametrix

## Manageability

### System Management\*

DASH\*

## Certifications

### Green Certifications<sup>8 9 10</sup>

ENERGY STAR 8.0  
 EPEAT Gold Registered  
 ErP Lot 6/26  
 TCO Certified 9.0  
 RoHS compliant

<sup>8</sup>The items listed under the "Green Certifications" section may not only refer to certification but also registration or self-declaration.

<sup>9</sup>EPEAT registration and ENERGY STAR certification are dependent on system OS.

<sup>10</sup>EPEAT is registered where applicable, please see [epeat.net](http://epeat.net) for registration status by country.

### Other Certifications

TÜV Rheinland Low Blue Light  
 MIL-STD-810H